



[www.kuhfussonline.com](http://www.kuhfussonline.com)

**THE ENTIRE**

**WORLD OF TECHNOLOGY**





Since 1920, August Kuhfuss has been known as a reliable dealer of technical equipment in Braunschweig and the surrounding area. While in the early days the focus was clearly on the sales of rolling element bearings to industrial customers, the company has considerably expanded its field of expertise over the past decades and adapted its product range to the needs of other customer groups. Today our company trades under the name August Kuhfuss Nachf. Ohlendorf GmbH, and with nine locations in Germany is known for its extensive range of industrial and workshop equipment and counts

a wide variety of customers from industry, medium-sized enterprises and also from the private sector among its customers.

At our ten locations in Braunschweig, Bielefeld, Dessau, Celle, Chemnitz, Göttingen, Hamburg, Hanover, Poznan and Teterow we employ more than 120 staff members to support our customers and offer competent and friendly telephone advice, expert and reliable on-site service and excellent technical support in all stages of customer contact, through to well after delivery.

In addition, we are able to offer comprehensive technical services and support in our TSC Nord and TSC Ost, a technical service centre with a focus on machining and LinearCenter. At our main location on Münchenstraße in Braunschweig, more than 800,000 articles - including 60,000 products from the field of drive technology and 25,000 articles in the rolling element bearing field - are constantly stocked over a total shelf area of more than 10,000m<sup>2</sup>.

## HISTORY

- |  |   |  |
|--|---|--|
| <b>1920</b> Establishment of the technical retailer "August Kuhfuss"                             | <b>2000</b> The company TEGAS, Technical Gas Sales in Celle, is integrated into the company; the product groups occupational health and safety and tools are given a higher priority                                    | <b>2007</b> Opening of the Chemnitz office                                     |
| <b>1928</b> Start of partnership with SKF GmbH   | <b>2002</b> New construction of an office building on the well-established location at Münchenstraße in Braunschweig: The storage and sales area are expanded from 900 m <sup>2</sup> to more than 2,600 m <sup>2</sup> | <b>2008</b> Opening of a branch in Teterow (with attached mechanical workshop) |
| <b>1969</b> Takeover of the company by Günther Ohlendorf after many years working in the company | <b>2005</b> Opening of the branch office in Hanover   | <b>2011</b> Opening of the Hamburg and Poznan branches                         |
| <b>1973</b> Son Rolf-Günther Ohlendorf joins the company   |   | <b>2013</b> Opening of the branch office in Göttingen                          |
| <b>1975</b> The company August Kuhfuss takes over the distribution activities of SKF             |   | <b>2016</b> New construction at the Göttingen branch                           |
| <b>1995</b> Strong growth leads to the construction of a new branch in Dessau                    |   | <b>2017</b> Reopening of the branch in Hanover at a new location               |
|  |   | <b>2020</b> Opening of the branch in Bielefeld with our Maintenance Service    |
|  |   | <b>2021</b> Opening of the branch in China                                     |

## OUR SUPPLIERS



## OUR

## PRODUCT PORTFOLIO

Our extensive range includes approx. 800,000 items, which we divide into two areas:

## CORE RANGE

**K Rolling element bearings:**

- SKF
- NTN-SNR
- INA
- FAG
- SLF
- FSQ
- Marbett
- Federal Mogul

**K Sealing technology:**

- FST Freudenberg
- Dichtomatik
- Ziller (Nilos)

**K Linear technology:**

- BoschRexroth
- INA
- SNR
- SKF
- THK
- Schneeberger

**K Industrial couplings:**

- Flender
- KTR
- Regal Rexnord
- R&W

**K Chains and belts:**

- Regal Rexnord
- RMCC
- LinkBelt
- Tsubaki
- Donghua
- Köbo
- Optibelt
- Sedis
- IWIS
- Gates

**K chemical products, adhesives and lubricants:**

- Loctite
- Weicon
- Teroson
- Tesa
- Omnifit
- Pattex
- OKS
- SKF
- Perma
- CRC

**K Industrial hoses:**

- Masterflex
- Norres

**K Pneumatics/hydraulics:**

- SMC
- Riegler
- Voss
- Lukas

**K Personal protection (PPE):**

- Otter
- Baak
- Honeywell
- Atlas
- KCL
- Schubert
- Ansell
- Kimberly-Clark

**K DIN and standard parts:**

- Reyher
- Dresselhaus
- ABC/Spax
- Fischer

**K Industrial shock absorbers:**

- ACE Stoßdämpfer

**K Wheels and rollers:**

- RV Räder-Voge
- Blickle
- Torwegge

**K Hand tools:**

- WERA
- Knipex
- Kukko
- Projahn
- GEDORE

**K Power tools:**

- Milwaukee
- Metabo
- DeWALT
- Bosch

## PROCUREMENT RANGE

**K Rolling element bearings:**

- DV-B
- Timken
- IDC
- KRW
- Kaydon
- NSK

**K Sealing technology:**

- SKF

**K Linear technology:**

- HIWIN

**K Linear technology:**

- HIWIN

**K Industrial couplings:**

- Desch
- Kupplungswerk Dresden
- Renk
- PTP

**K Chains and belts:**

- Renold
- Wippermann
- KTS
- SKF
- ContiTech
- Klump
- NK Kunststofftechnik

**K chemical products, adhesives and lubricants:**

- SIKA
- UHU
- Klüber
- Shell
- Castrol
- 3M

**K Pneumatics/hydraulics:**

- Festo
- BoschRexroth
- Norgren
- Parker

**K DIN and standard parts:**

- Ganter

**K Hand tools:**

- Bessey
- Elora
- HaWe
- Rodcraft
- Stanley
- VBW
- Wiha

**K Power tools:**

- Ekekra Beckum
- Hilti
- Hitachi
- Makita

**K Welding equipment:**

- Rehm
- Oerlikon
- Kayser+GCE rhöna
- Kemper

**K Gases:**

- Linde



## INDUSTRIAL COUPLINGS

- k** Bellows couplings
- k** Bolted couplings
- k** Flange couplings
- k** All-steel couplings
- k** Claw couplings
- k** Plate couplings
- k** Tyre couplings

**We machine couplings quickly and individually according to customer requirements.**

## GEARS AND GEARED MOTORS

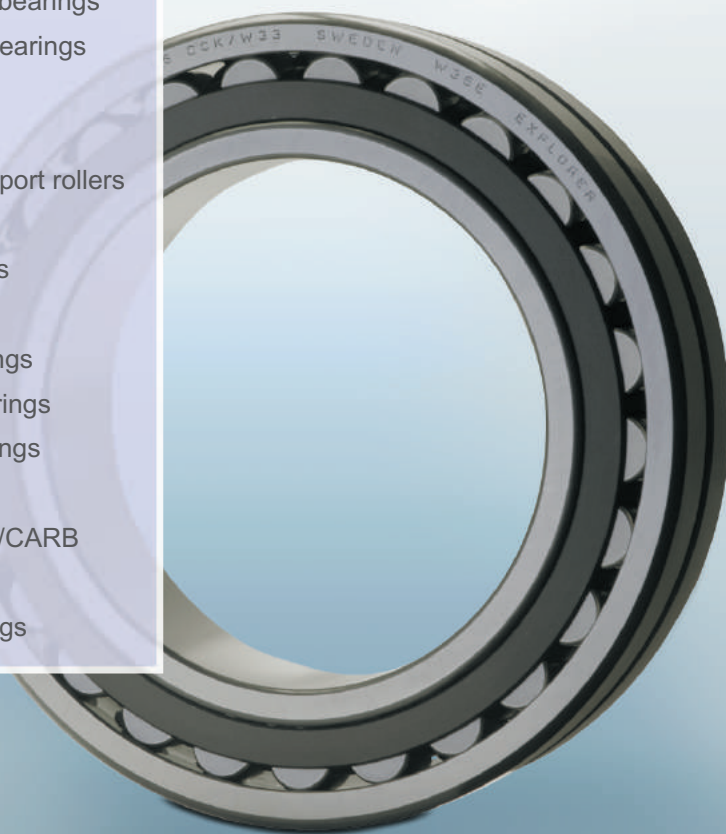
- k** Spur gear motors
- k** Flat gear motors
- k** Tapered helical gear motors
- k** Spur worm gear motors
- k** Worm gear motors
- k** Spur gear
- k** Tapered helical gear
- k** Bevel gear

## INDUSTRIAL SHOCK ABSORBERS

- k** Industrial shock absorbers for braking moving masses with high energy absorption and long service life
- k** Safety shock absorbers for emergency stop use, for example on shelf-stacking equipment, conveyor systems or crane systems, individually for your application
- k** Structural dampers, the low-cost alternative for emergency stop use
- k** Damping plates for viscoelastic damping of shock and vibration via wide-area energy reduction
- k** Maintenance-free rotational brakes for controlled braking of rotating or linear movements
- k** Oil brakes for fine adjustment during sawing, grinding, drilling, etc.
- k** Brake cylinders for regulating travel speeds
- k** Gas pressure springs for lifting and lowering masses of all kinds

## ROLLING ELEMENT BEARINGS

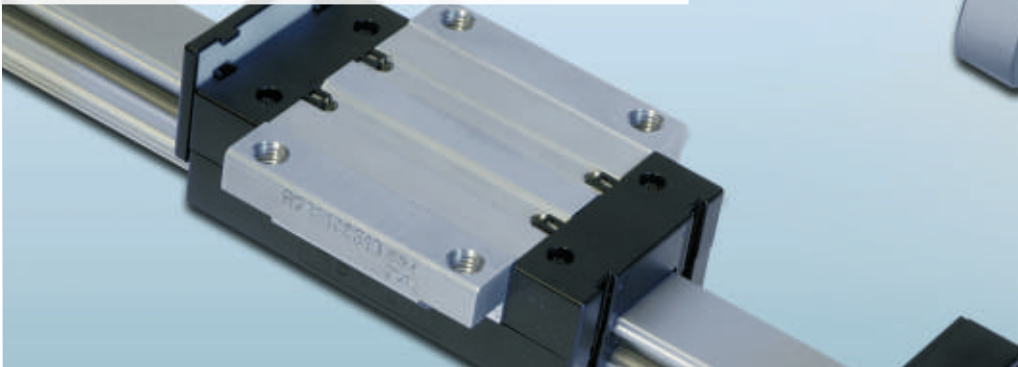
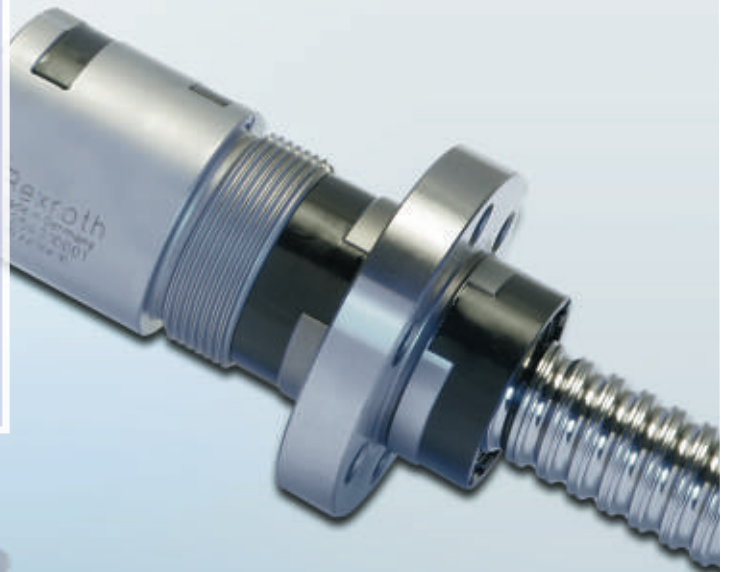
-  Axial angular contact ball bearings
-  Axial deep groove ball bearings
-  Axial cylindrical roller bearings
-  Rotary ball connection
-  Tapered roller bearings
-  Rollers/cam rollers/support rollers
-  Miniature bearings
-  Stainless steel bearings
-  Needle bearings
-  Self-aligning ball bearings
-  Self-aligning roller bearings
-  Deep-groove ball bearings
-  Angular ball bearings
-  Toroidal roller bearings/CARB
-  Y-bearings
-  Cylindrical roller bearings





## LINEAR TECHNOLOGY

- K** Actuators (e.g. electric motor with spindle drive)
- K** Gas pressure spring
- K** Hydrostatic screw drives
- K** Hydraulic cylinders
- K** Ball bushings
- K** Ball screws (ball circulation spindle)
- K** Linear motors
- K** Roller screw drives
- K** Guide rails in different dimensions
- K** Carriage guides
- K** Spindle drives
- K** Toothed belt drives
- K** Rack drives



**NTN** **SNR**

### STANDARDISIERTE LINEARACHSE

AXE Linearachsen sind die perfekte Kombination aus technischem Know-how und praxistauglichen Lösungen für Kundenanforderungen.

Dank eines Online Konfigurators, basierend auf Standardkomponenten, ist eine einfache, schnelle und qualitativ hochwertige Konstruktion von einzelnen Modulen möglich.

Die Produktion und Logistik in Deutschland garantiert eine hervorragende Lieferzeit der Module.

Unser Angebot umfasst alle Elemente, die für eine sichere Umsetzung beim Kunden erforderlich sind.

**AXE, Tausende von verfügbaren Kombinationen, um Ihre eigene Lösung erstellen zu können.**

[www.ntn-snr.com](http://www.ntn-snr.com)



With You

GESTALTEN SIE IHRE INDIVIDUELLE LÖSUNG



## V- AND TOOTHED BELTS

- k** Wide V-belts
- k** Ribbed belts
- k** Narrow V-belts
- k** Special belts
- k** Toothed belts made of different materials

With our  
belt cutting machine  
we can make  
every width.

## CHAIN TECHNOLOGY

- k** Roller chains in steel, SS and maintenance-free design
- k** Hollow-pin chains
- k** Chains according to company standards
- k** Carrier chains
- k** Flyer chains
- k** Storage conveyor chains
- k** Conveyor chains (bush conveyor, support lug, scraper chains)
- k** Gripper chains
- k** Hinge chains
- k** Apron conveyor chains
- k** Round steel chains (link chains)
- k** Chain wheels and pulley wheels pre-drilled, ready-drilled
- k** Chain guides
- k** Chain tensioning systems
- k** Assembly and disassembly tools

We machine chain wheels  
quickly and individually  
according to customer  
requirements.



**Improved**  
Wear Resistance

**Improved**  
Dynamic and Static Safety

**Increased**  
Chain Joint Loading Capability

**Improved**  
Hygiene

**Increased**  
Corrosion Protection

Rexnord Rollenketten für die anspruchsvollsten Anwendungen





## SEALING TECHNOLOGY

- K** Mechanical seals
- K** Hydraulic seals
- K** Complete sets of seals
- K** Custom-cut profile plates
- K** O-rings
- K** Paper seals
- K** Pneumatic seals
- K** Shaft sealing rings



### DER ORIGINAL SIMMERRING®

#### DER ORIGINAL SIMMERRING® – EXKLUSIVE QUALITÄT VON FREUDENBERG SEALING TECHNOLOGIES

Mit der Erfindung des Simmerrings® revolutionierte Walther Simmer im Jahr 1932 das Konzept der Wellendichtringe. Seitdem setzt Freudenberg Sealing Technologies diese Tradition fort. 90 Jahre nach dieser bahnbrechenden Idee ist der Original

Simmerring® heute das Synonym für Hochleistungs-Elastomerdichtungen. Mehr als 3.500 Produktvarianten aus NBR und FKM beweisen dies in vielen Anwendungsbereichen. [fst.com](http://fst.com)

FREUDENBERG  
SEALING TECHNOLOGIES

**FREUDENBERG**  
INNOVATING TOGETHER



## Hightech-Schläuche und Verbindungssysteme

Innovative Schlauch- und Anschlusstechnik für alle Anwendungsbereiche

Masterflex SE  
Willy-Brandt-Allee 300  
45891 Gelsenkirchen  
Tel. +49 209 97077-0  
Fax +49 209 97077-33  
www.Masterflex.de  
info.Masterflex@MasterflexGroup.com

**MASTERFLEX**  
Connecting Values  
A MASTERFLEX GROUP COMPANY

### HYDRAULICS AND PNEUMATICS

- K** Fittings
- K** Hoses
- K** Valve technology
- K** Cylinders
- K** Pipe fittings
- K** Cutting ring fittings
- K** Consumables





**WEICON**

- › Kleb- und Dichtstoffe
- › Technische Sprays & Flüssigwerkstoffe
- › Hochleistungsfette & Montagepasten
- › Abisolierwerkzeuge

+49 (0) 251 9322 0    info@weicon.de

www.weicon.de

Google play    App Store






## DIN AND STANDARD PARTS

We supply the entire range of DIN and standard parts with about 20,000 different items either directly from our own warehouse stock or procure it at short notice from well-known manufacturers - next day delivery guaranteed.

Of course, we also provide you with all the necessary tools for professionally assembling connecting elements.



## LUBRICANTS AND INDUSTRIAL ADHESIVES

- k** Solid lubricants
- k** Greases
- k** Oils
- k** Plastics
- k** Anaerobic hardening adhesives (hot melt adhesives)
- k** Dispersion adhesives
- k** Epoxy adhesives
- k** Adhesives
- k** Contact adhesives
- k** Solvent-containing wet adhesives
- k** Methylmethacrylate adhesives
- k** Polyurethane adhesives
- k** Silicone cyanacrylate adhesives (superglue)



[www.crcind.com](http://www.crcind.com)

## CHEMISCHE SPEZIALPRODUKTE FÜR WARTUNG UND INSTANDHALTUNG





**HAND TOOLS**

- K** Precision tools - stone, steel, thread, wood, saws
- K** Water scales, measuring tools
- K** Workshop trolleys
- K** Torque wrenches
- K** Wrenches
- K** Bit selection
- K** Screwdrivers & angled pin spanners
- K** Pliers
- K** Torches, lights, spotlights
- K** Measuring tools



**POWER TOOLS**

- k** Cordless tools
- k** Drilling and chisel hammers
- k** Powerful drills and hammer drills
- k** Reciprocating saws
- k** Grinders
- k** Jigsaws and circular saws





**PPE (PERSONAL PROTECTIVE EQUIPMENT)**

- K** Safety glasses
- K** Hearing protection
- K** Gloves
- K** Trousers
- K** Shirts
- K** Jackets
- K** Head protection
- K** Shoes
- K** Vests

**CASTORS AND WHEELS**

- K** Fixed castors
- K** Castors
- K** Swivel castors
- K** Pneumatic tyre wheels
- K** Wheels
- K** Heavy duty castors
- K** Pulleys



**bedrunka+hirth**

Workplace up to date – mehr Raum zum Arbeiten

Ist-Analyse, Beratung, Planung  
und Montage aus einer Hand!  
Gerne unterstützen wir Sie bei  
Ihrem nächsten Projekt  
**BETRIEBSEINRICHTUNG.**

[www.bedrunka-hirth.de](http://www.bedrunka-hirth.de)



## WELDING EQUIPMENT

- k** Rehm welding technology & plasma cutters
- k** Oerlikon consumables
- k** Kayser + GCE rhöna autogenous technology
- k** Kemper extraction equipment
- k** Welding accessories

### Additional services:

- Help with the selection of welding accessories
- Repair of welding equipment
- Support in the installation of welding stations
- Technical training for staff

## TECHNICAL GASES

- k** Argon
- k** Forming gas (nitrogen-hydrogen mixture)
- k** Helium
- k** Methane
- k** Nitrogen
- k** Various mixed gases
- k** Hydrogen
- k** Nitrous oxide
- k** Cleanroom gases

## MEDICAL GASES

- k** Medical helium
- k** Medical oxygen

## ABRASIVES

- k** Diamond grinding
- k** Fibreglass discs
- k** Crown flex discs
- k** Sanding belts
- k** Sanding sheets
- k** Buffing mop
- k** Buffing mop plate
- k** Roller belts



## OUR OWN PRODUCTS



## ADVICE

## AND SUPPORT

Our competent employees in the back office and field service team ensure that you as a customer feel optimally advised and looked after at all times - personal, competent, solution-oriented and of course friendly. For us, customer service is a promise that we will continue to deliver well after the delivery of the products.

Our sales engineers provide the link between manufacturer and user and bring all their experience and know-how to bear in optimisation, problem-solving and planning. In our technical service, we rely on up-to-date knowledge - both from our own employees and from our contractual partners, who support us with this and, among other things, also carry out product training at the customers' premises.

No matter what your problem is - we will find the optimum solution for you. The multitude of our individual services can often be effectively combined into an all-round, carefree package. We are happy to support you with regard to preventive maintenance.

## 24 hr. Service

Unfortunately, there are always unpredictable events. If you are threatened with an emergency, such as a machine breakdown, we will of course be there for you 24 hours a day, 7 days a week.





## TRAINING

### FOR YOUR EMPLOYEES

Well-trained employees are critical to the success of your business. We provide various employee training courses for you and, for example, convey product knowledge, the correct handling of products or the correct and time-saving assembly. The seminars take place in our own, spacious and technically well-equipped training rooms - or on request and with the appropriate number of participants in your own rooms.

If you need tailor-made training: No problem! We develop and deliver training courses on a wide variety of topics and also draw on experts from our suppliers and their training programmes. We would be pleased to provide you with a customised offer.



## SOPHISTICATED

### LOGISTICS

Our ability to deliver is more than being able to deliver an in-stock product to the customer as quickly as possible - namely also the ability to deliver your product just-in-time or according to fixed delivery schedules. In order to meet the expectations of our customers, we rely on a well-stocked warehouse, powerful software for administration and electronic data exchange as well as well-proven parcel services and freight forwarders.





## UP-TO-DATE COMMUNICATION

## AND DIGITAL ORDERING

We take advantage of the opportunities offered by state-of-the-art technology and software to optimise our processes and to offer our customers up-to-date communication and order processing. For example, an internet-based system consisting of e-catalogue (BMECat, e-cl@ss) and communication via EDI/XML/OCI is used to handle business transactions.

We offer our customers a wide range of electronic solutions, such as ordering goods from us, checking stock or placing enquiries.

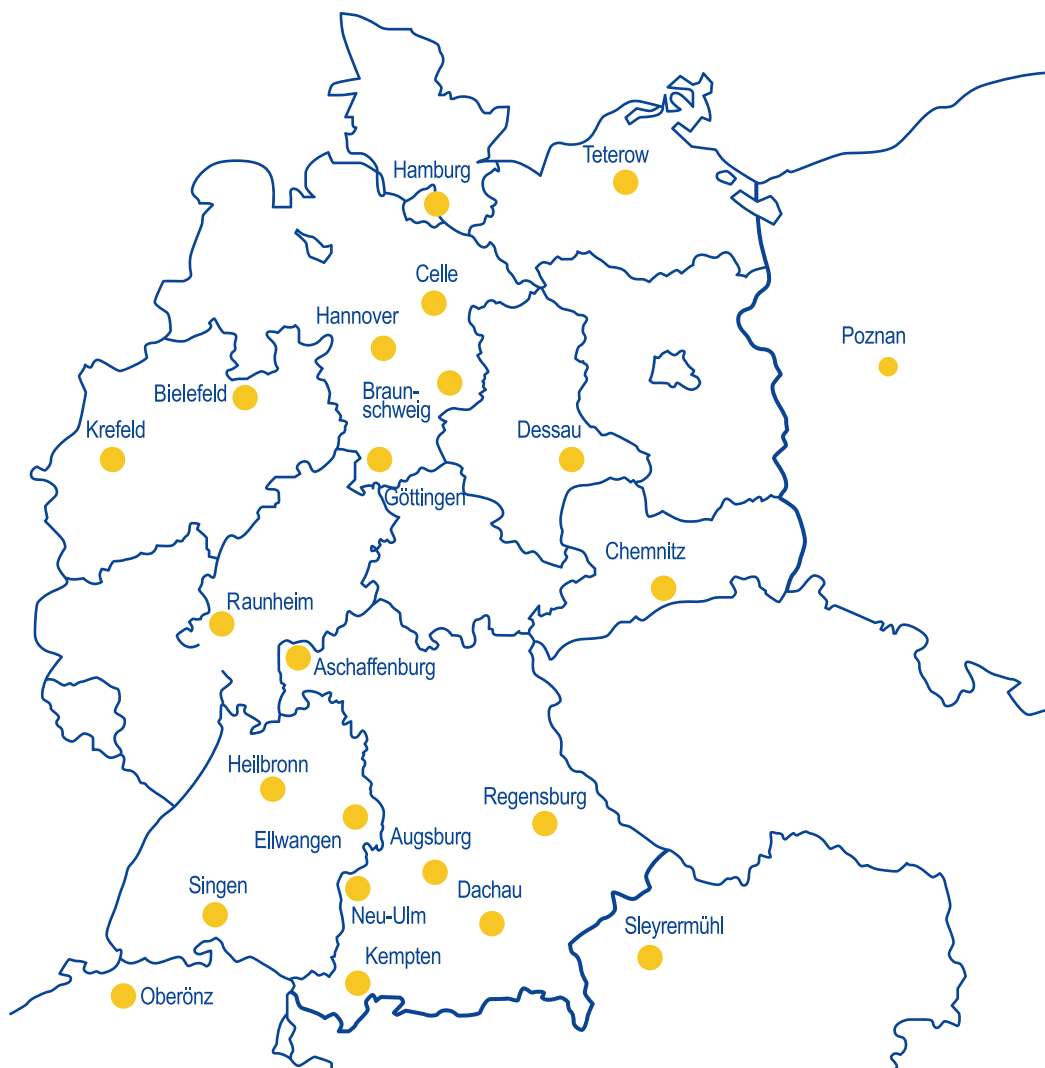
## COMPREHENSIVE COMPETENCE

## WITH REGIONAL DELIVERY CAPABILITY



We are a shareholder of ONE GmbH & Co.KG, a network of seven prestigious companies based in Germany.

Through this collaboration, we offer you a nationwide network for the procurement of mechanical spare parts, coupled with a high level of technical service. The ability to deliver and the service around the products form the basis for the supply concepts for overall cost reduction and process optimisation.



## PROCESSING AND

## PACKAGING

In our Technology Service Centre we are able to machine shaft and rail guidance systems of linear technology and aluminium design profiles, as well as the mechanical machining and assembly of drive elements.

We offer machining technology for turning and milling and work according to drawing, prototype and specific customer request.

The services of our company include:

- Replacement of bearing seats
- Bushing machine parts
- Machining shafts
- Turning and finely seating bearing shafts
- Boring couplings and chain wheels, turning fitting seats
- DIN grooves in bored holes and shafts
- Special chain wheel manufacture
- Flat grinding
- Assembly service

In the event of an emergency, we are there for you, with the shortest delivery times.

## LINEAR SCOPE

## OVERVIEW

**Separation and chamfering of guide shafts and guide rails**

**Turning of guide shafts**

- Axial inner thread
- Axial outer thread
- Journals
- Penetrations
- Fits

**Joint machining of multi-piece shafts**

**Milling of guide shafts**

- Radial bores
- Radial threads
- Woodruff key grooves
- Wrench flats
- Surfaces

**Mounting of shafts with shaft support**

**Milling of rail systems**

- Mounting holes / additional holes
- Drilling pattern changes
- Fitting pin holes
- Radial and axial threaded holes
- Surfaces
- Grooves

**Joint machining of multi-section guide rails**





## DRIVE SERVICES

### OVERVIEW

#### Boring and groove machining of

- Chain wheels
- V-belt and toothed belt pulleys
- Couplings

#### Drawing-based machining of

- Chain wheels
- V-belt and toothed belt pulleys

#### Machining of

- Sintered bronze journal bearings
- Inner rings
- Dry slide bearings

#### Pressing in rolling element bearings

#### Cutting roller chains to length

#### Cutting of

- Toothed belts
- Flat belts
- Round belts





# SPECIAL MACHINING

## SERVICE OVERVIEW

### Machining technology

#### - Conventional turning

- Drive shafts
- Motor bearing plate repair by reconditioning the bearing seats
- Castors, running shafts, support shafts, support rollers, rollers
- Hollow shaft designs compl. with flanged wheel and axial shaft
- Pulleys
- Bearing shells, flanges, washers, sleeves, bolts
- Thread turning of all kinds
- Hard machining

#### - CNC milling

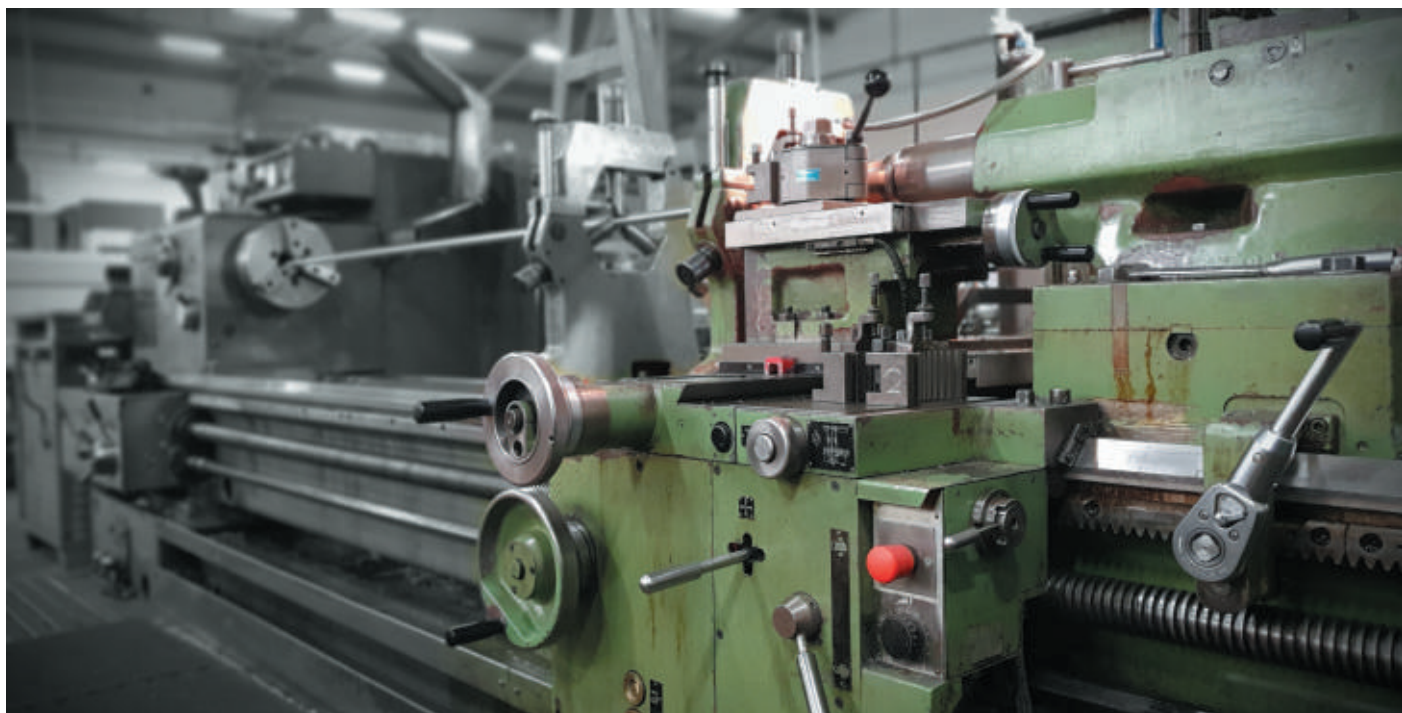
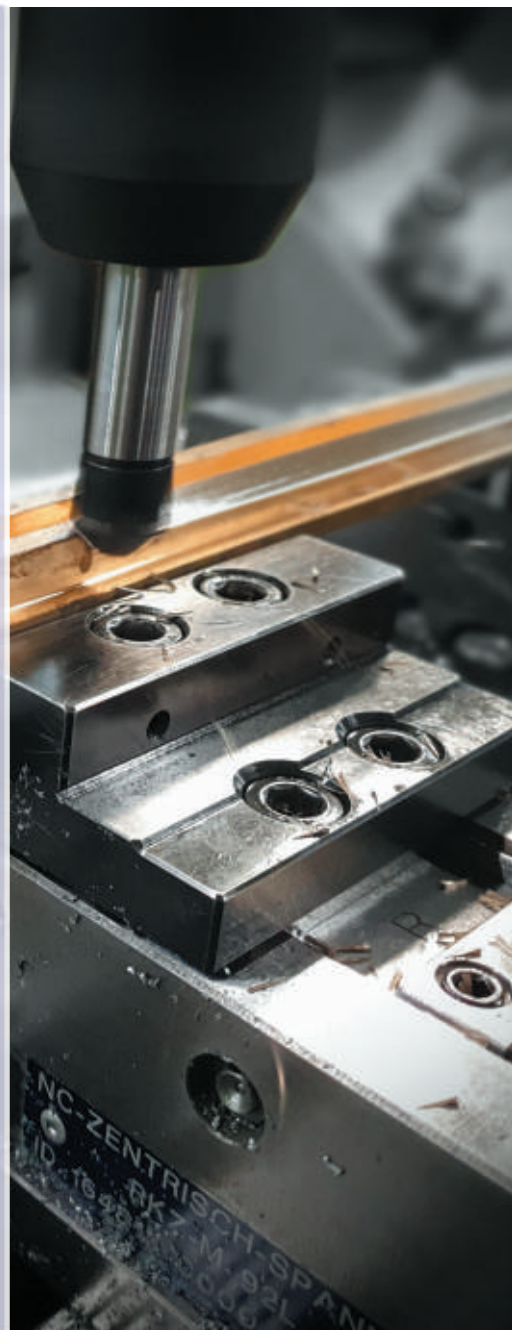
- Drilling, tapping, deep hole drilling
- Centering
- Spindle finishing
- Reaming
- Turning out
- Drill thread milling, thread milling
- Positions and position patterns
- Milling, face milling
- Rectangular pocket, circular pocket
- Rectangular spigots, circular spigots
- Longitudinal groove, circular groove, open groove
- Engraving
- Contour milling using circular and linear interpolation

#### - Flat grinding

- Fit grinding
- Blade grinding

### Industrial mechanics

- Assembly and dismantling of assemblies
- Damage identification
- Bearing replacement



# MAINTENANCE SERVICES

## A-Z OF SERVICES

### Assembly support

- Installation instruction
- Supervising
- Tool instruction

### Components

- Identifying alternatives
- Classification according to delivery capability
- Function checks

### Compressed air / pneumatics

- Mounting and optimisation
- Fault analysis and component testing
- Leakage location and detection
- Assembly / dismantling
- Maintenance works

### Condition Monitoring

- Online systems
- Offline measurements
- Creation of measurement routes
- Reporting including recommendations for action
- Configuration, installation and commissioning
- Visualisation ( control stations / monitoring screens )

### Conveyor technology

- Replacement of components according to specifications
- Repair and maintenance of conveyor and drive elements

### Customer training

- Individual training courses according to customer requirements
- Product training by our premium manufacturers

### Digitisation

- Digital control stations for production and maintenance
- Visualisations

### Drawing parts

- Production, procurement and installation of spare parts and
- Manufactured parts
- Series requirements

### Drive and conveyor belts

- Mounting and optimisation
- Assembly / dismantling
- Alignment with laser systems

### Equipment maintenance

- Maintenance work according to manufacturer's specifications
- Custom maintenance work according to customer specifications

### Filtration

- Replacement of filter elements
- Creation of maintenance routes
- Particle measurements

### General assembly work

- Assembly installation
- On-site assembly
- Packaging





## Hydraulics

- Leakage location and detection
- Repair of servo and proportional valves
- Express repair 48h
- Oil analysis
- Repair of cylinders and pumps
- Pipework construction
- Maintenance works

## Industry 4.0

- Intelligent solutions from production data, system monitoring, visualisation and connection to your ERP system

## Laser and measurement equipment

- Alignment of direct and indirect drives, chains, belts, couplings
- Measurement of linear guides and measuring systems (interferometry)

## Lubricant equipment

- Design, installation, commissioning of:
- Single-point lubrication systems
- Multi-point lubrication systems
- Lubricant analysis
- Central lubrication systems Reduction of suppliers by optimising requirements and manufacturers

## Pipework construction

- Compressed air
- Hydraulics
- Process fluids

## Rolling element bearings

- Failure cause assessment incl. reporting
- Customer training
- Assembly/dismantling according to the manufacturer's specifications
- Online/offline monitoring
- Reconditioning





[www.kuhfussonline.com](http://www.kuhfussonline.com)

## AUGUST KUHFUSS NACHF. OHLENDORF GMBH

### OUR BRANCHES AND OFFICES

#### **38118 Braunschweig Münchenstraße 9**

Mon - Thu 07:00 - 17:00  
Fri 07:00 - 15:30  
Sat 08:00 - 12:00

Tel.: +49 531 28178-0  
Fax: +49 531 28178-6111  
E-Mail: [info@kuhfussonline.com](mailto:info@kuhfussonline.com)

#### **33609 Bielefeld Schelpmilser Weg 22**

Mon - Thu 07:30 - 17:00  
Fri 07:30 - 15:00

Tel.: +49 0521 988935-0  
E-Mail: [bielefeld@kuhfussonline.com](mailto:bielefeld@kuhfussonline.com)

#### **29227 Celle Bruchkampweg 12**

Mon - Thu 07:00 - 17:00  
Fri 07:00 - 15:30  
Sat 09:00 - 12:00

Tel.: +49 5141 98079-0  
Fax: +49 5141 98079-29  
E-Mail: [celle@kuhfussonline.com](mailto:celle@kuhfussonline.com)

#### **06842 Dessau-Roßlau Kabelweg 38**

Mon - Thu 07:00 - 17:00  
Fri 07:00 - 15:30

Tel.: +49 340 80026-0  
Fax: +49 340 80026-26  
E-Mail: [dessau@kuhfussonline.com](mailto:dessau@kuhfussonline.com)

#### **37079 Göttingen Industriestraße 16**

Mon - Thu 07:00 - 17:00  
Fri 07:00 - 15:30  
Sat 08:00 - 12:00

Tel.: +49 551 50667-0  
Fax: +49 551 50667-77  
E-Mail: [goettingen@kuhfussonline.com](mailto:goettingen@kuhfussonline.com)

#### **22885 Hamburg-Barsbüttel Fahrenberg 27-31**

Mon - Thu 07:00 - 17:00  
Fri 07:00 - 15:30

Tel.: +49 40 6759326-0  
Fax: +49 40 6759326-2811  
E-Mail: [hamburg@kuhfussonline.com](mailto:hamburg@kuhfussonline.com)

#### **30165 Hannover Sokelantstraße 5**

Mon - Thu 08:00 - 17:00  
Fri 08:00 - 15:30

Tel.: +49 511 473237-0  
Fax: +49 511 473237-29  
E-Mail: [hannover@kuhfussonline.com](mailto:hannover@kuhfussonline.com)

#### **09116 Chemnitz Neefestraße 86**

Mon - Thu 07:00 - 17:00  
Fri 07:00 - 15:30

Tel.: +49 371 335149-0  
Fax: +49 371 335149-29  
E-Mail: [chemnitz@kuhfussonline.com](mailto:chemnitz@kuhfussonline.com)

#### **17166 Teterow Koppelbergstraße 4**

Mon - Thu 07:00 - 17:00  
Fri 07:00 - 15:30

Tel.: +49 3996 15779-0  
Fax: +49 3996 15779-29  
E-Mail: [teterow@kuhfussonline.com](mailto:teterow@kuhfussonline.com)

#### **TSC Nord 38118 Braunschweig Münchenstraße 9**

Mon - Thu 07:00 - 16:00  
Fri 07:00 - 15:30

Tel.: +49 531 28178-42  
Fax: +49 531 28178-69  
E-Mail: [info@tsc-nord.com](mailto:info@tsc-nord.com)

#### **TSC Ost 17166 Teterow Koppelbergstraße 4**

Mon - Thu 07:00 - 17:00  
Fri 07:00 - 15:30

Tel.: +49 3996 15779 -0  
Fax: +49 3996 15779 - 29  
E-Mail: [teterow@kuhfussonline.com](mailto:teterow@kuhfussonline.com)

#### **60-478 Poznan ul. Truskawiecka 9**

Mon - Thu 08:00 - 16:00  
Fri 08:00 - 16:00

Tel.: +48 6162 419-0  
Fax: +48 6162 419210-2  
E-Mail: [polska@kuhfussonline.com](mailto:polska@kuhfussonline.com)

China:  
**250033 Jinan City,  
Beiguanbei Lu No.6 Tiaoqiao Qu**



[www.kuhfussonline.com](http://www.kuhfussonline.com)



[www.facebook.com/Kuhfuss.Online](https://www.facebook.com/Kuhfuss.Online)



[www.tinyurl.com/kuhfuss-youtube](https://www.tinyurl.com/kuhfuss-youtube)



[www.instagram.com/augustkuhfuss](https://www.instagram.com/augustkuhfuss)



[www.linkedin.com/company/august-kuhfuss-nachf-ohlendorf-gmbh](https://www.linkedin.com/company/august-kuhfuss-nachf-ohlendorf-gmbh)



[www.xing.com/pages/august-kuhfuss-nachf-ohlendorf-gmbh](https://www.xing.com/pages/august-kuhfuss-nachf-ohlendorf-gmbh)