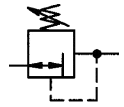


Pressure regulator with pressure-reduced single-seated piston valve or single-seated diaphragm valve and built-in strainer. Specially designed for use with water. The device is also suitable for all other applications involving neutral non-sticky liquids, air and neutral non-flammable gases.



High-pressure type

| | |
|----------------------------|---|
| Input pressure: | Max. 25 bar |
| Primary (inlet): | Min. 2.5 bar |
| After pressure: | Stepless adjustable from 1.5 to 12 bar |
| Minimum pressure drop: | 1 bar |
| Working temperature: | Max. 75 °C |
| Housing: | Bronze (Rg5) |
| Spring bonnet: | Hot-pressed brass (up to DN 32) Cast iron (from DN 40) |
| Piston valve: | Brass |
| Seals: | NBR - SBR |
| Valve trim: | Plastic, brass, stainless steel |
| Design: | Balanced seat piston valve, with strainer, interchangeable seat |
| Connection: | External threads to ISO 7-1, with solder connections |
| Pressure gauge connection: | Both sided G 1/4 |
| Mounting position: | Optional, preferably vertical |



Pressure regulators for drinking water (without DVGW approval), high secondary (outlet) pressure (max. 12 bar)

| Article no. | Thread R | DN | Flow rate kvs value m³/h | h1 | h2 | L |
|-------------|----------|----|--------------------------------|-----|----|-----|
| 100.111 | 1/2 | 15 | 2.9 | 150 | 27 | 136 |
| 100.112 | 3/4 | 20 | 3.9 | 150 | 27 | 145 |
| 100.113 | 1 | 25 | 5.4 | 150 | 29 | 160 |
| 100.114 | 1 1/4 | 32 | 6.1 | 150 | 47 | 178 |
| 100.115 | 1 1/2 | 40 | 12.0 | 320 | 75 | 210 |
| 100.116 | 2 | 50 | 13.0 | 320 | 85 | 210 |



100.112



100.115

Accessories and spare parts for high-pressure type (max. 12 bar)

| Article no. | Designation | for pressure regulators |
|-------------|-------------|---------------------------|
| 100.401 | Cartridge | 100.111, 100.112, 100.113 |
| 100.402 | Cartridge | 100.114 |
| 100.403 | Seal kit | 100.115 |
| 100.404 | Seal kit | 100.116 |

Department ZeDok

Phone 0049 7125 9497-41, -42, -53
Fax 0049 7125 9497-99
e-mail: zedok@riegler.de

edition 03/2012

Subject technical changes.

Riegler & Co. KG, Druckluft-Armaturen

Low-pressure type

| | |
|----------------------------|---|
| Input pressure: | Max. 16 bar |
| Primary (inlet): | Min. 1.2 bar |
| After pressure: | Stepless adjustable from 0.2 to 2 bar |
| Minimum pressure drop: | 1 bar |
| Working temperature: | Max. 75 °C |
| Housing: | Bronze (Rg5) |
| Spring bonnet: | Plastic PA6 (bis DN 32) Cast iron (from DN 40) |
| Piston valve: | SBR |
| Seals: | NBR - SBR |
| Valve trim: | Plastic, brass, stainless steel |
| Design: | Balanced seat piston valve, with strainer, interchangeable seat |
| Connection: | External threads to ISO 7-1, with solder connections |
| Pressure gauge connection: | Both sided G 1/4 |
| Mounting position: | Optional, preferably vertical |



DN 15 bis DN 32



DN 40 bis DN 65

Pressure regulators for water, low secondary (outlet) pressure (max. 2 bar)

| Article no. | Thread R | DN | Flow rate kvs value m³/h | h1 | h2 | L |
|-------------|----------|----|--------------------------|-----|----|-----|
| 100.121 | 1/2 | 15 | 2.9 | 127 | 27 | 136 |
| 100.122 | 3/4 | 20 | 3.9 | 127 | 27 | 145 |
| 100.123 | 1 | 25 | 5.4 | 126 | 29 | 160 |
| 100.124 | 1 1/4 | 32 | 6.1 | 109 | 47 | 178 |
| 100.125 | 1 1/2 | 40 | 12.0 | 300 | 75 | 210 |
| 100.126 | 2 | 50 | 13.0 | 300 | 85 | 210 |



100.122



100.125

Accessories and spare parts, low-pressure type, 2 bar

| Artikel-Nr. | Designation | for pressure regulators |
|-------------|-------------|-------------------------|
| 100.501 | Cartridge | 100.121 |
| 100.502 | Cartridge | 100.122 |
| 100.503 | Cartridge | 100.123 |
| 100.504 | Cartridge | 100.124 |
| 100.505 | Cartridge | 100.125 |
| 100.506 | Cartridge | 100.126 |