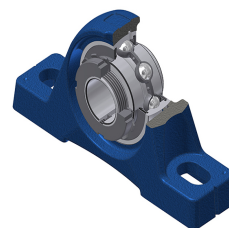


## Karta techniczna PDF UKPE210H



### Zespoły łożyskowe

| Dane techniczne |          |
|-----------------|----------|
| A               | 54 mm    |
| A1              | 34 mm    |
| B               | 31 mm    |
| B1              | 55 mm    |
| d               | 45 mm    |
| d1              | 70 mm    |
| G               | R1/8"    |
| H               | 57,20 mm |
| H1              | 21,50 mm |
| H2              | 115 mm   |
| J               | 158 mm   |
| L               | 200 mm   |
| L1              | 61 mm    |
| N               | 18 mm    |
| N1              | 23 mm    |
| s1              | 27,50 mm |

| Parametry |          |
|-----------|----------|
| C         | 35,10 kN |
| C0        | 23,20 kN |
| T min.    | -20 °C   |
| T max.    | 100 °C   |

| Inne dane                  |          |
|----------------------------|----------|
| Waga                       | 2,75 kg  |
| oznaczenie tulei wciąganej | H2310    |
| Oznaczenie oprawy          | PE210    |
| Oznaczenie łożyska         | UK210G2H |

